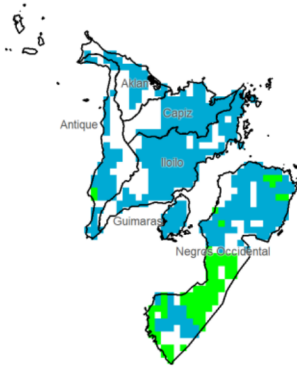
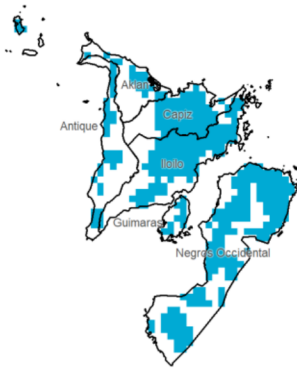


Region VI (Western Visayas)

Water Availability for Rice
Prevailing Stage : (III) Reproductive



Water Availability for Corn
Prevailing Stage : (III) Reproductive



Provincial Values

Province	Mon. Ave. Rainfall (mm)	Rice		Corn	
		CS	CCI (%)	CS	CCI (%)
Aklan	714.7	I	488.7	I	705.8
		II	467.3	II	562.5
		III	457.4	III	478.5
		IV	585.2	IV	558.2
Antique	689.4	I	301.3	I	411.7
		II	290.7	II	362.2
		III	285.7	III	328.7
		IV	345.1	IV	360.6
Capiz	710.3	I	1127.7	I	1588.5
		II	1116.9	II	1546.2
		III	1111.7	III	1519.9
		IV	1173.5	IV	1544.9
Guimaras	622.3	I	481.3	I	698.5
		II	454.9	II	524.4
		III	442.8	III	430.0
		IV	602.3	IV	519.4
Iloilo	676.9	I	920.3	I	1326.6
		II	902.8	II	1222.4
		III	894.7	III	1157.7
		IV	996.6	IV	1219.1
Negros Occidental	445.4	I	248.0	I	480.5
		II	229.8	II	356.7
		III	221.5	III	289.3
		IV	332.6	IV	353.2

Crop Stage (CS) highlighted in black to the dominant stage during the month of July.

Rice CS:
(I) Nursery
(II) Vegetative
(III) Reproductive
(IV) Ripening

Corn CS:
(I) Establishment
(II) Vegetative
(III) Reproductive
(IV) Maturity

CCI Category:
Inadequate (Yellow)
Sufficient (Green)
Excess (Blue)

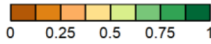
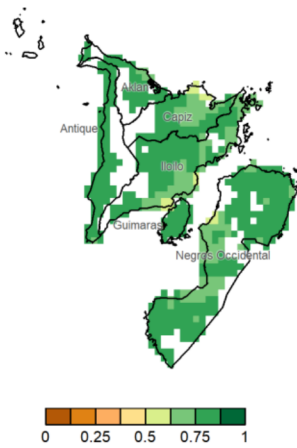
Regional Summary

Most parts of the region received excessive rainfall for the month, which may have caused potential damage on both rice and corn crops at any of the crop stages.

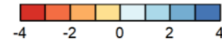
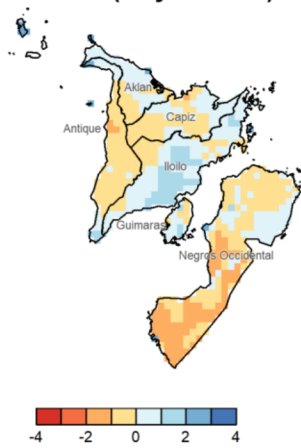
Meanwhile, the SPEI3 suggests generally near normal conditions for the past three months in Aklan, Antique, Capiz and Guimaras, with slightly drier condition in the southern portion of Negros Occidental and slightly wetter in central portion of Iloilo.

The extreme rainfall indices show notable rainfall amounts which could have caused harm on both rice and corn crops in most parts of the region with 50-200mm of maximum 1-day rainfall and 100-400mm and beyond maximum 5-day rainfall. This was mainly attributed to the heavy rainfall event from the combined effects of Southwest monsoon and LPA during the third week of the month.

NDVI



SPEI3 (May-Jun-Jul)



RX1day



RX5day

